

Conversion of a Standard Single Hung Window to a Drywall Unit

- Remove the bottom sash from the window, and set aside.
- Remove the glazing bead from the top glass (Fig. A), deglaze the glass by running a putty knife between the glass and the window frame from the outside. Remove the glass and set aside. Use a 1" chisel to remove the glazing tape from the glazing leg on the frame.
- Using a sawzall or a hack saw, cut the meeting rail approximately 1" from the frame (Fig. B) to avoid cutting into the meeting rail reinforcement bar. Remove the meeting rail from the window and the meeting rail screws from the frame.
- To reassemble as a drywall window, put the bottom sash back into the window. Put the meeting rail with drywall blocks on top of the sash (Fig. C) in the locked position, and mark the screw holes in the drywall blocks on the frame with a pencil (Fig. D).
- Remove the sash and drywall meeting rail, put the drywall meeting rail into the frame and align with the pencil marks. Screw the drywall meeting rail into place. (Fig. E) Re-tape the glazing leg with two sided tape, remove the blue plastic, (Fig. F) replace the glass and the glazing bead, top and bottom pieces first and then the mitered side pieces last.
- Put the bottom sash back into the frame to complete the installation.



Fig. A

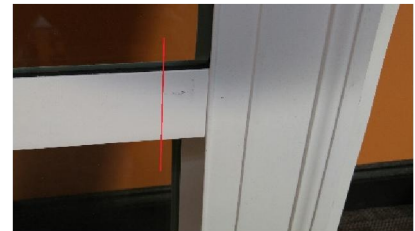


Fig. B



Fig. C



Fig. D



Fig. E



Fig. F